



SafeBridge

User's Guide

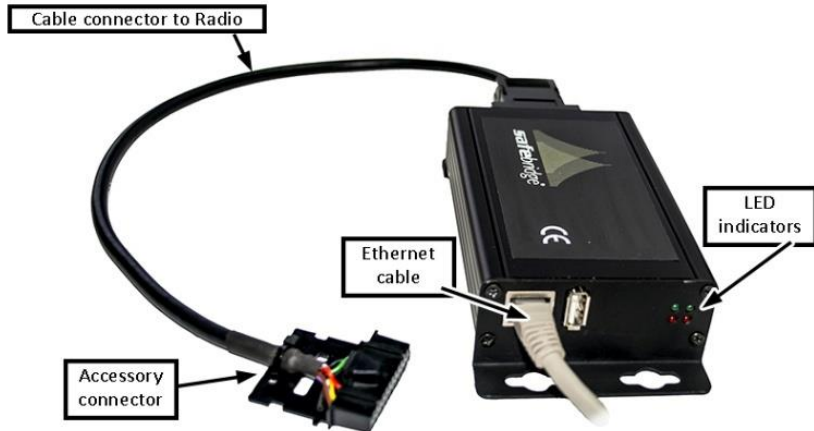
SafeMobile offers a world of wireless applications that help organizations better manage their mobile assets, fleet and personnel. For more information, see www.safemobile.com.

Contents

- 1 Introduction2
- 2 Using SafeBridge3
 - 2.1 Prepare the mobile stations.....3
 - 2.2 Use SafeBridge3
- 3 Identifying SafeBridge IP.....4
 - 3.1 Using an IP Scanner application4
 - 3.2 Via the router admin interface.....4
- 4 Connect radioPad to SafeBridge.....6
- 5 Using SafeBridge Admin Interface7

1 Introduction

The SafeBridge unit is a device that connects to a mobile radio and takes full control over the functionality of the radio. The connection of the SafeBridge with the radio is done via the Accessory connector.



The SafeBridge unit is designed to display its state using 4 LEDs:

LEDs on the right	
Red LED	The base station to which the SafeBridge is attached to is turned on.
Green LED	SafeBridge finished loading.
LEDs on the left	
Red LED	
Green LED	

2 Using SafeBridge

This section presents the required steps to use SafeBridge.

2.1 Prepare the mobile stations

Before using SafeBridge, make sure that you properly set up the mobile stations:

1. Connect the subscriber station to the PC where the MOTOTRBO CPS is installed.
2. Click the **Read** button. The reading of the mobile station configuration will start.
3. On the right menu, click **Network** and from the **Forward to PC** drop-down list select **Via USB**.



4. On the **Actions** menu click the **Write** icon. Wait until writing to the device is completed then disconnect the mobile radio from the PC.

2.2 Use SafeBridge

1. Connect the LAN cable and the accessory connector to the SafeBridge.
2. Power OFF the radio and connect it to the SafeBridge unit via the accessory connector.
3. Power ON the radio. While the right red LED of the SafeBridge unit will indicate that the radio is ON and in 20-25 seconds the radio will give an acknowledgement audio signal.
4. On the Android device open Play Store and install the **radioPad** application.
5. Connect the Android device to the same network as the SafeBridge™
6. [Connect to the SafeBridge Admin interface](#) and manage users, define zones and private or group calls. For details on how to use the SafeBridge Admin interface, see the *SafeBridge Administrator's Guide*.
7. [Connect radioPad to SafeBridge](#).

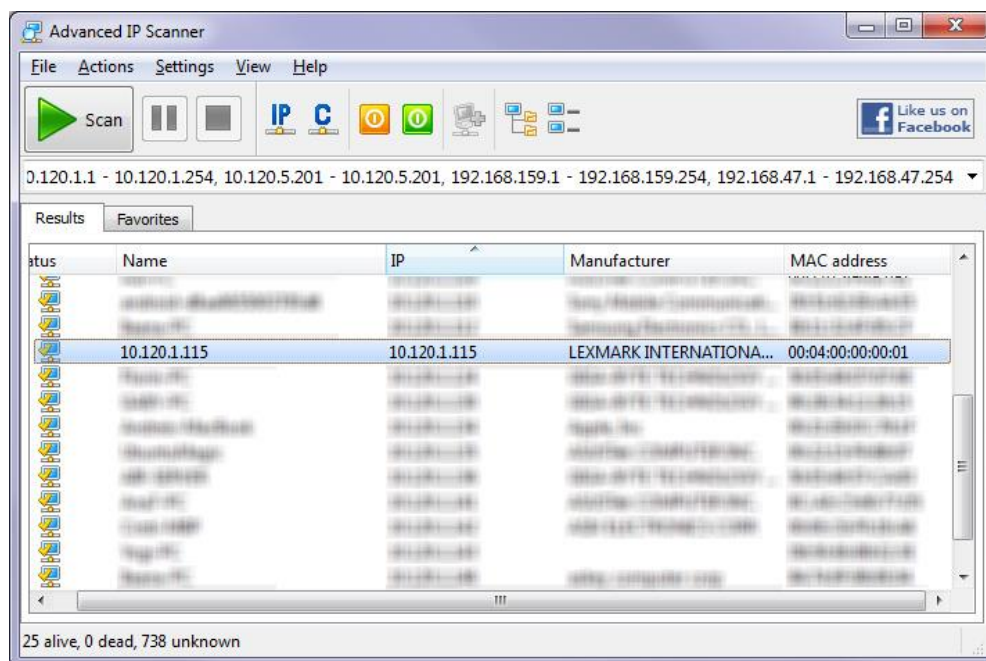
3 Identifying SafeBridge IP

You can identify the SafeBridge IP either by [using an IP scanner application](#), or [via the router admin interface](#)

3.1 Using an IP Scanner application

The simplest way to find out the SafeBridge IP is by using an IP scanner application. We highly recommend you to use **Advanced IP Scanner** as it will scan the entire network and display the list of the connected devices from the LAN. Download it from [here](#).

SafeBridge will have under the Manufacturer field “**LEXMARK INTERNATIONAL, INC.**” and the MAC address with the same first 6 numbers **00:04:00**.



3.2 Via the router admin interface

Routers have an administrative interface where you can see all the connected devices.

The router used for sample purposes is a Linksys WRT54GL using a custom firmware DD-WRT v24-sp1.

To identify the SafeBridge IP via the router admin interface:

1. Open a web browser and type the IP address of the router. In general it is 192.168.0.1; however, for sample purposes we will use 10.120.1.1. A login page displays.
2. Enter the administrator credentials and click **Login**.
3. Find the list of connected devices. In the router’s web interface look for a link or button named something like “attached devices,” “connected devices,” or “active clients”.

For the router type we used, the list of connected devices can be accessed from **Status > LAN**.

Active Clients


Host Name	IP Address	MAC Address	Conn. Count	Ratio [4096]
...	105	3%
...	9	0%
...	56	1%
...	9	0%
*	10.120.1.115	00:04:00:00:00:01	0	0%
...	25	1%
...	30	1%
...	1	0%
...	222	5%
...	12	0%
...	5	0%
...	140	3%
...	9	0%
...	51	1%
...	47	1%

In this list a Device named * should exist; please note the IP, it’s the SafeBridge IP. Other way of identifying it is by MAC Address, the first 6 numbers are **00:04:00**.

Once you identify the SafeBridge IP, you can [connect the radioPad with the SafeBridge](#).

4 Connect radioPad to SafeBridge

To connect radioPad to SafeBridge and use it:

1. Open the radioPad app and make sure to set the SafeBridge IP by clicking the  button.



2. Click **OK**.
3. Enter default credentials: username **demo** and password **demo** and click **Login**. The radioPad app displays:



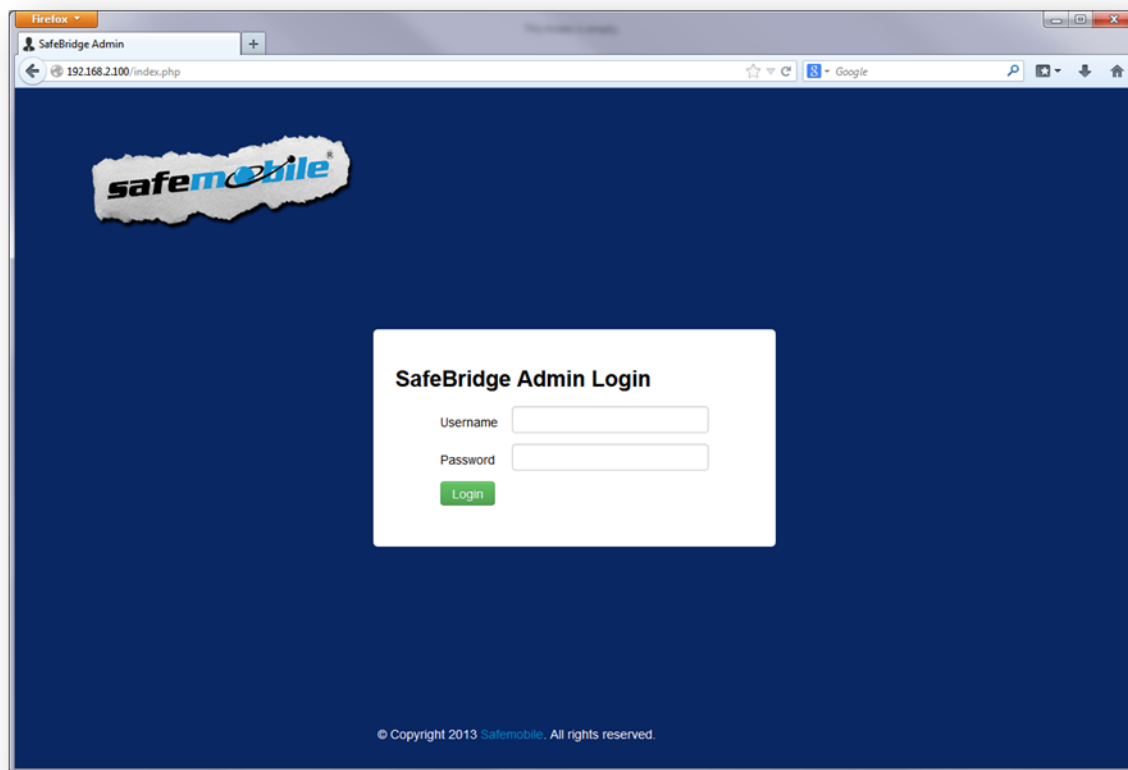
5 Using SafeBridge Admin Interface

SafeBridge provides a web admin interface which allows you to define zones and channels, private and group calls, manage users, view and manage recordings, update the firmware version of the SafeBridge.

To log into the SafeBridge Admin interface:

1. Open a browser and type the SafeBridge IP address. The IP address of the SafeBridge demo is <http://192.168.2.100/>. For the best results, use the latest version of Mozilla Firefox, Google Chrome, Opera, and Internet Explorer.

The login page displays similar to:



2. Enter credentials and click the **Login** button. The SafeBridge Admin interface will be displayed. When logging in for the first time, use the default login credentials (that is, *username: admin* and *password: admin*). For security reasons, we highly recommend that you change the password after the first login.